

Tsunami Preparedness & Planning In Australia

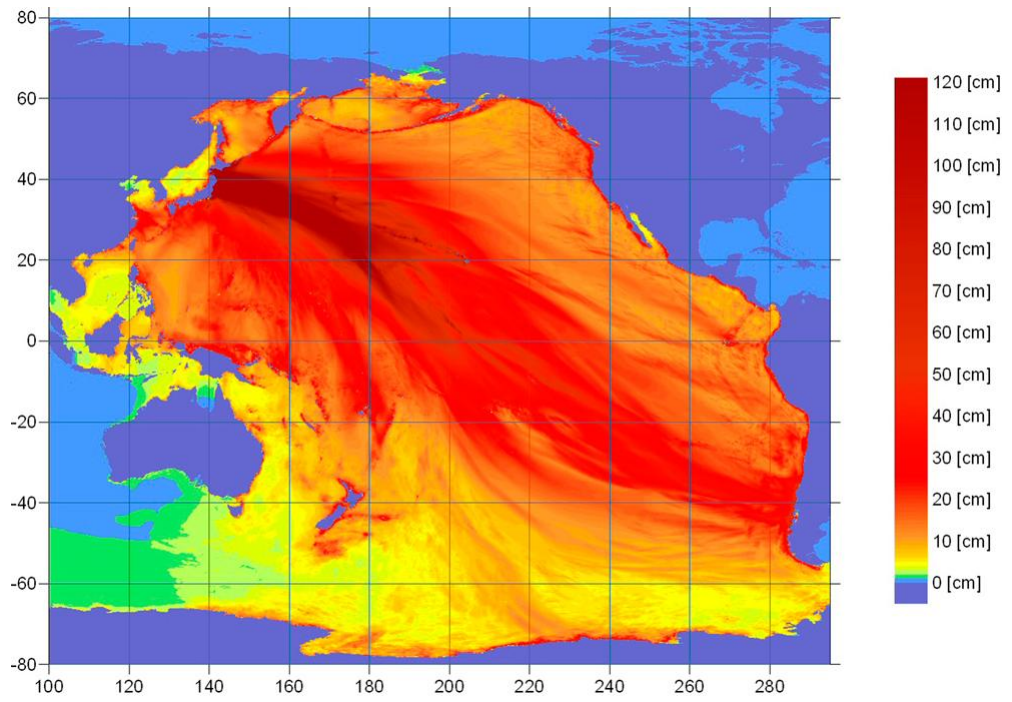
Peter George AM
Chief Operating Officer, SLISA



In brief...

- Tsunami
- Risk to Australia
- Warnings
- Role of SLS in planning & response

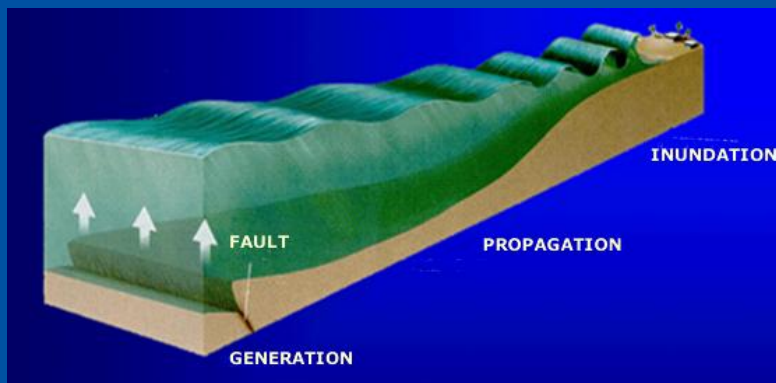


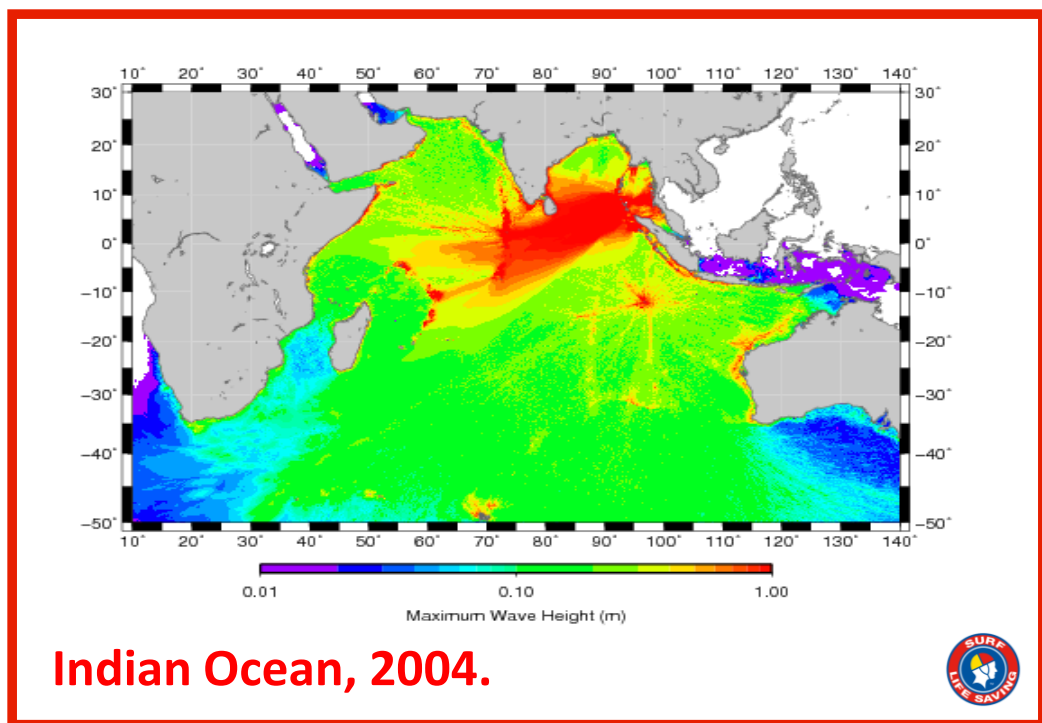
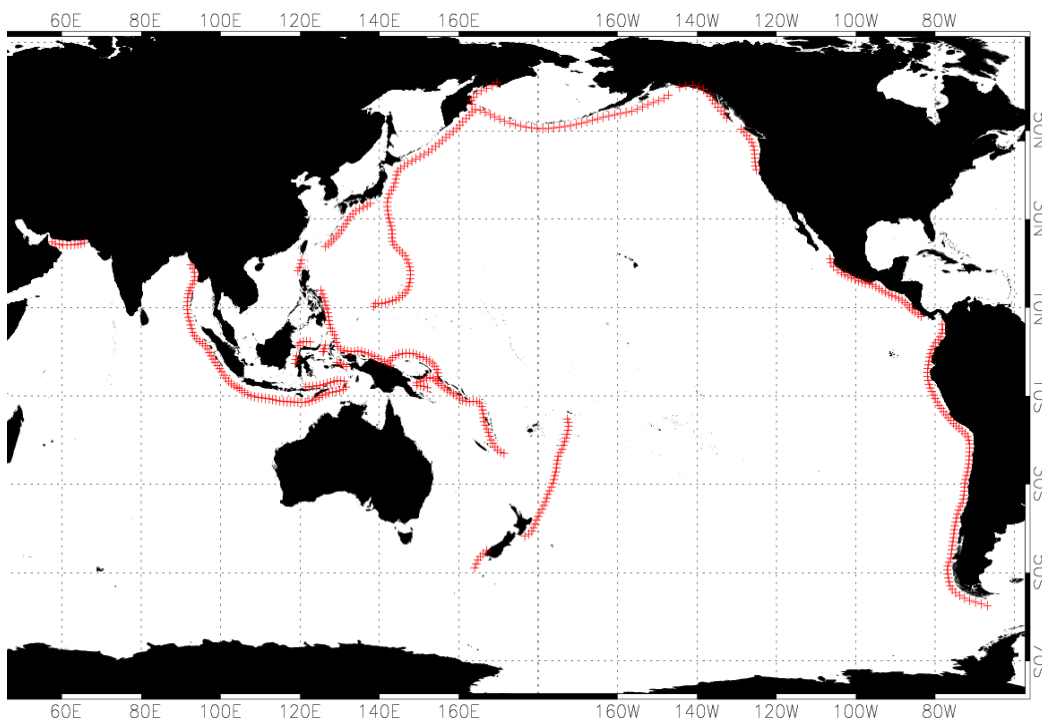


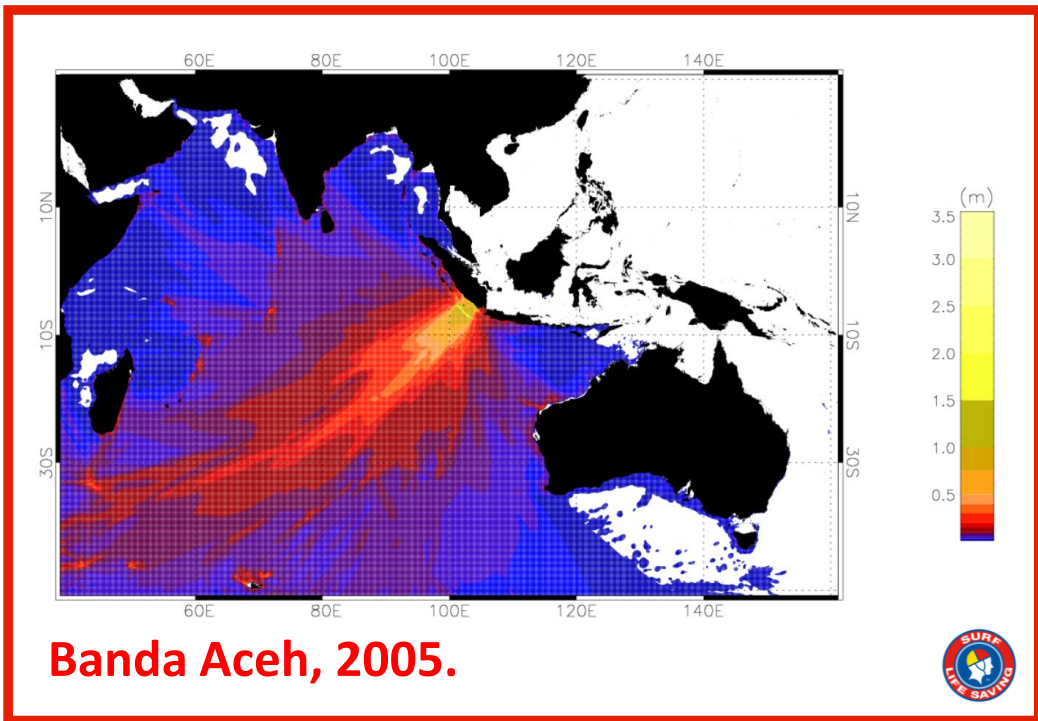




Important facts.







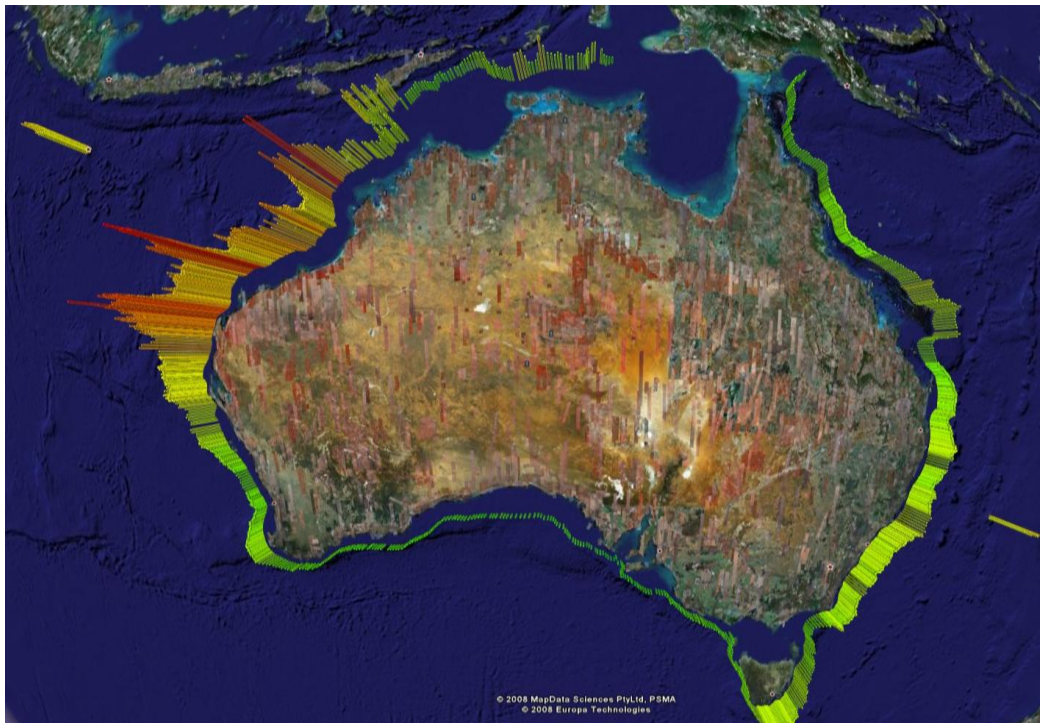
Australian Impact.

Image courtesy of Paul Dickenson

Image courtesy of the Geraldton Guardian

Image courtesy of Geoscience Australia

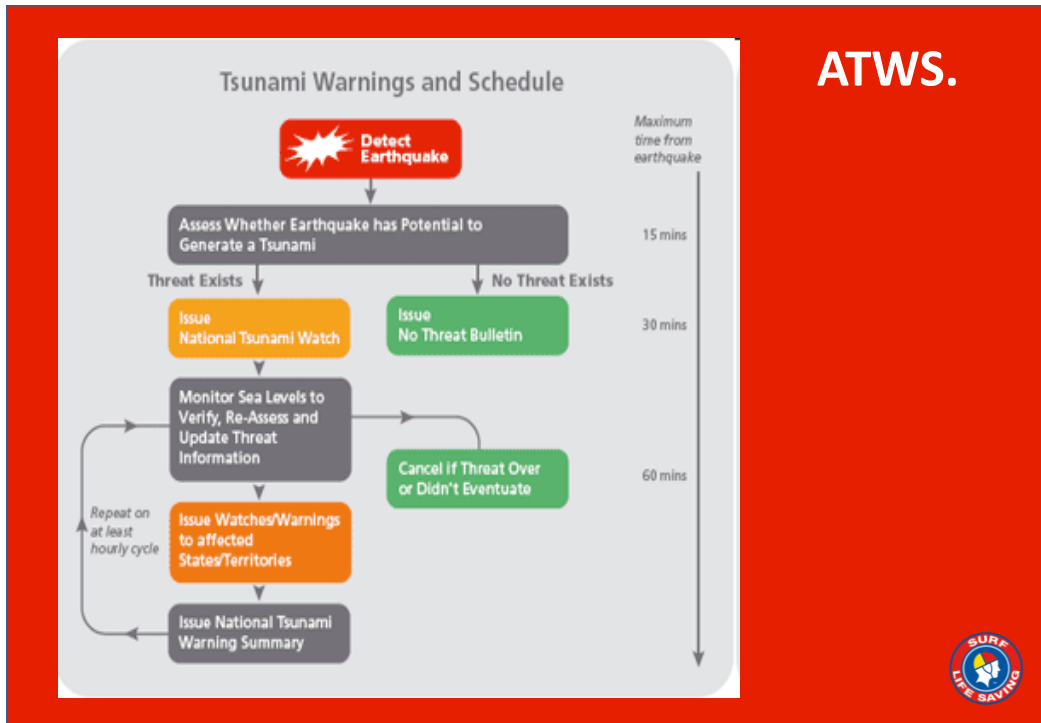
The complex block features a red background. At the top right, the text "Australian Impact." is displayed in white. Below this, there are three images. The first is a photograph of a destroyed building with a collapsed roof, with the caption "Image courtesy of Paul Dickenson". The second is a photograph of a boat at a pier with a white panel floating in the water, with the caption "Image courtesy of the Geraldton Guardian". The third is a map showing inundation extent, with labels "Max run-up: 3m" and "Max inundation distance: 200m", and the caption "Image courtesy of Geoscience Australia". A SURF LIFE SAVING logo is located in the bottom right corner.



ATAG.

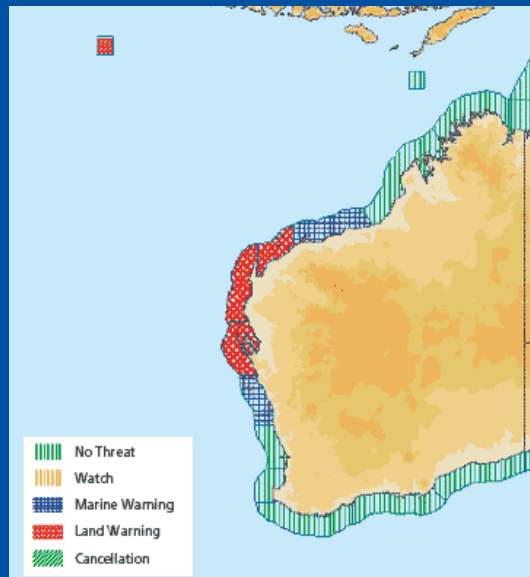
- Australian Tsunami Advisory Group (ATAG)
- EMA/AG, Geoscience Australia, BOM, SES & SLS
- Increase Australia's capability to respond to the threat of Tsunami
- Measurement, Modelling, Warning System, Response & Recovery

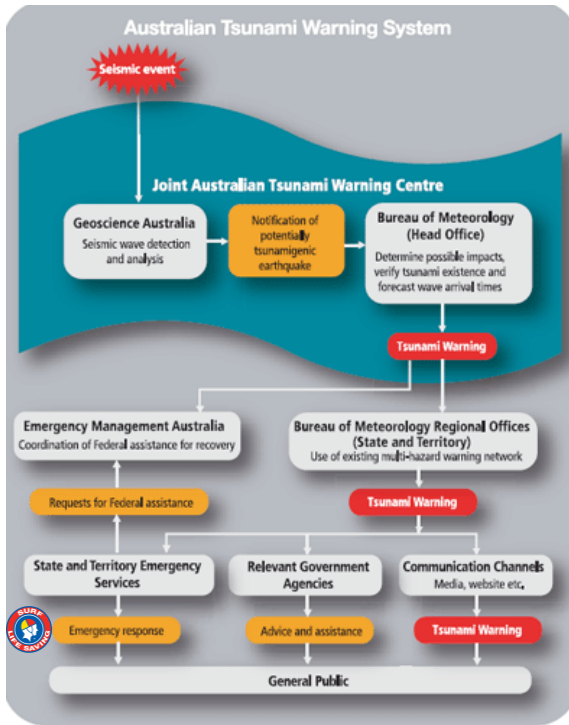




- **No threat**
An undersea earthquake has been detected, however it has not generated a tsunami, or the tsunami poses no threat to Australia and its offshore territories.
- **Marine and immediate foreshore threat**
Warning of potentially dangerous waves, strong ocean currents in the marine environment and the possibility of only some localised overflow onto the immediate foreshore.
- **Land inundation threat**
Warning for low-lying coastal areas of major land inundation, flooding, dangerous waves and strong ocean currents.

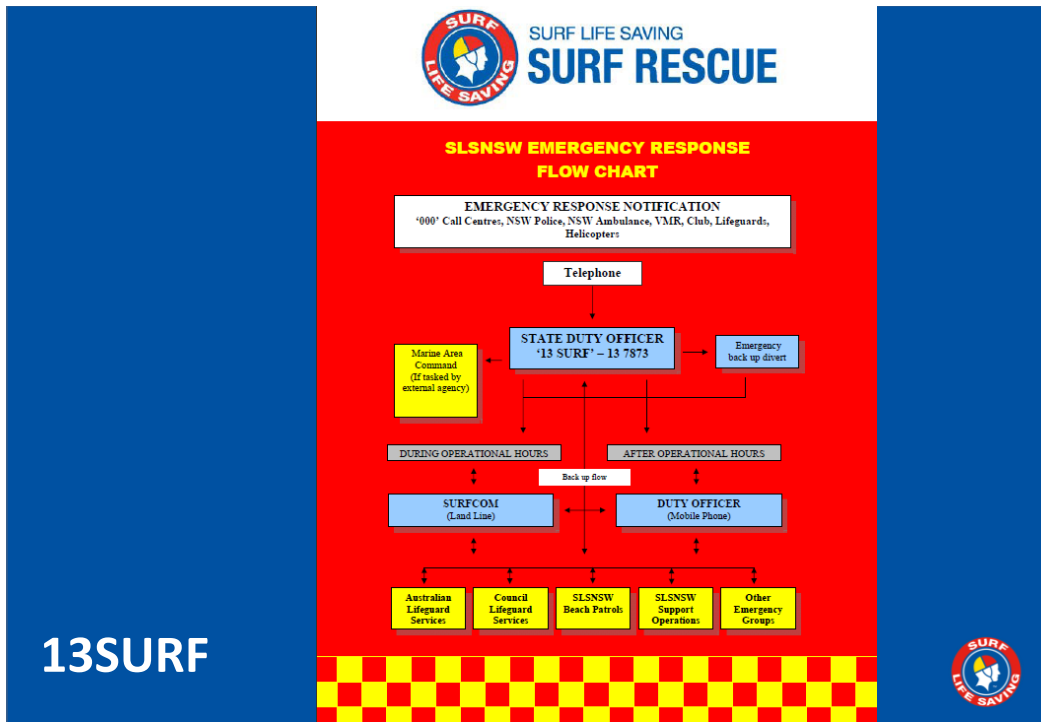
ATWS.





The role of SLS.

- Tremors over the magnitude 6 threshold occur once a week in our region
- Only a handful result in warnings
- SLS support the SES at a state level
- Preparedness, response, recovery



13SURF



SLS Role.

- Beach/coastal warning and evacuation
- Relocation of essential rescue and recovery equipment
- Rescue and recovery
- Education and awareness



SLS Education Resource.

- Members & Public
- About Tsunami and Preparedness
- About the role of SLS



Future Development.

- Community awareness
- Modelling
- Signage
- Local emergency plans



For more information on tsunamis:

www.beachsafe.org.au/tsunami



